

FS721M

Designed for Large-Format Metal Production

▶ www.farsoon.com



PRODUCTION READY

Developed with an industry-leading build volume of 720×420×420mm, combined with powerful dual/quad 500W or eight 1000W laser options, Farsoon's FS721M is able to achieve significantly increased throughput for large-scale parts or extended industrial series production.

PRECISION + QUALITY

Farsoon's advanced software control and precise scanning system allows uniformed performance in multi-laser overlap zones. Continuous powder feeding, optimized gas flow and integrated filter module allows for uniformed melting process of metal powder. Powerful build process controls & real-time re-coating monitoring ensuring the top industrial build quality.

EASE OF USE

The FS721M's integrated conveyer system, breakout station and advanced powder handling system allows for an efficient and safe build cylinder transportation and fully-sealed de-powdering process. Features such as advanced calibration and electric leveling allow for streamlined workflow. In addition like all Farsoon machines the FS721M is a truly open platform which offers the user a high degree of control to tailor processing parameters for industrial application requirements or cost-competitive metal additive manufacturing.

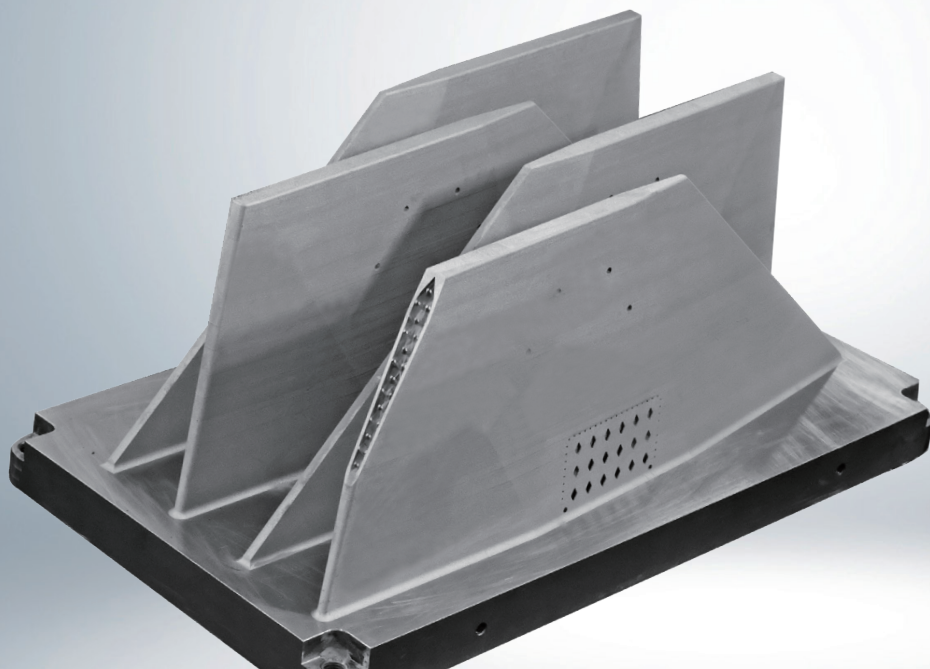
FARSOON FS721M

TECHNICAL DATA	FS721M-2	FS721M-4	FS721M-8
External Dimensions (L×W×H)	6610mm×1830mm×2500mm (260.2×72.0×98.4 in)		
Build Cylinder Size¹ (L×W×H)	720×420×420 mm (28.3×16.5×16.5 in) (Height incl. build plate)		
Net Weight	Approx. 5000 kg (11023.1 lb)		
Layer Thickness	0.02~0.1 mm (0.0008-0.0039 in)		
Scanning Speed	Max. 10.0 m/s (32.8 ft/s)		
Laser Type	Dual Lasers, 2×500W	Quad Lasers, 4×500W	Eight Lasers, 8×1000W
Scanner	F theta lenses	F theta lenses	F theta lenses or dynamic focusing system
Inert Gas Protection	Argon/Nitrogen		
Average Inert Gas Consumption in Process	6-8 L / min		
Operating System	64 bit Windows 10		
Comprehensive Software	BuildStar, MakeStar®		
Key Software Features	Open machine key parameters, real-time build parameter modification, three-dimensional visualization, diagnostic functions		
Data File Format	STL		
Power Supply	EUR/China: 400V±10%, 3~/N/PE, 50Hz, 32A/40A US: transformer sold with machine		
Operating Ambient Temperature	22-28°C (71.6-82.4°F)		
Materials²	316L, 17-4PH, TA15, Ti6Al4V*, AlSi10Mg, Al5250, IN718*, HX*, Maraging Steel Grade 300*, more materials to come		

1 The functional build volume depends on the parts/materials.

2 The materials marked with * are in the build process development.

Many factors may affect the performance characteristics of products. We recommend that you make tests to determine the suitability of a product for your particular purpose prior to use. Farsoon makes no warranties of any type, express or implied, including but not limited to, the warranties of merchantability or fitness for a particular use. This also applies regarding the consideration of possible intellectual property rights as well as laws and regulations. Farsoon reserves the right to change the technical data without notice. Farsoon®, Buildstar®, Makestar® are registered trademarks of Farsoon Technologies. Last Change: 2023-09



WING RUDDER WITH LIGHT WEIGHT STRUCTURE
 SIZE: 665 (L)*55(W)*252(H)MM EACH
 MATERIAL: IN718
 SYSTEM: FS721M-4
 LAYER THICKNESS: 0.03MM
 PRINT TIME: 250 H

www.farsoon.com

AMEA Farsoon Technologies Co., Ltd. | +86.731.8397.6198 | globalinfo@farsoon.com | No. 181 Linyu Road, Changsha National High-Tech Industrial Zone, Hunan, China

AMERICAS Farsoon Americas CORP. | +1 512-551-9901 | contact@farsoonam.com | 3161 Eagles Nest Street, Suite 350, Round Rock, TX 78665

EUROPE Farsoon Europe GmbH | +49 711 13796 0 | wehelpyou@farsoon-eu.com | Liebknechtstrasse 33, 70565 Stuttgart, Germany